



OGIO® Ladies Modern Performance Full-Zip. LOE703

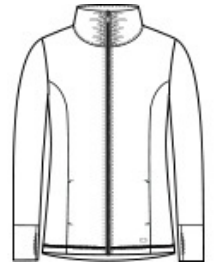


LAYERABLE WARMTH STRETCH STAY-COOL WICKING
REFLECTIVE DETAILS

- 7.4-ounce, 85/15 poly/spandex w ith stay-cool w icking technology
- Reflective OGIO heat transfer label for tag-free comfort
- Oversized zip-through cow l neck collar
- Front seaming for shaping
- Black reflective O heat transfer on back right shoulder
- Pleating on back
- Metaluxe® zipper
- Engraved matte black metal O zipper pull
- Black reflective O heat transfer on left pocket
- Thumbholes for w armth

CARE INSTRUCTIONS

Machine w ash cold w ith like colors. Do not use fabric softener. Only non-chlorine bleach, w hen needed. Tumble dry low . Remove promptly. Cool iron, if necessary. Do not dry clean.



front



back

HOW TO MEASURE



BUST

Measure under the arm and around the fullest part of the bust w ith arms dow n, keeping tape horizontal.

SIZE CHART

| | XS | S | M | L | XL | 2XL | 3XL | 4XL |
|------|-------|-------|-------|-------|-------|-------|-------|-------|
| Size | 2 | 4/6 | 8/10 | 12/14 | 16/18 | 20/22 | 24/26 | 28/30 |
| Bust | 32-34 | 35-36 | 37-38 | 39-41 | 42-44 | 45-47 | 48-51 | 52-55 |

COLOR INFORMATION

Please note: PMS code information is shown only when an exact match is available.



Blacktop
PMS BLACK C



Deep Olive



Navy
PMS 5255C



Tarmac Grey
PMS BLACK 7C